

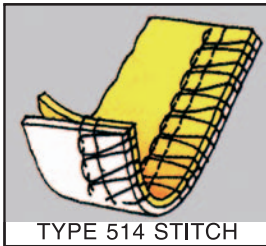
MODEL 14TU854

PORTABLE, MULTI-FUNCTION,
OVERLOCK STITCH MACHINE

4 THREAD, 2 NEEDLE (MOCK SAFETY STITCH)

**COLOR
CODED
THREADING**

**SAFETY
SHUT-OFF
SWITCH**

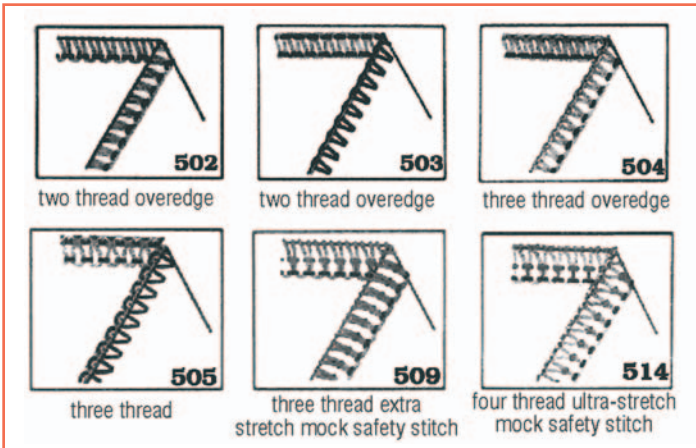


TYPE 514 STITCH

- Differential Feed
- Easy color coded threading
- Adjustable stitch length dial
- Equipped with built-in motor
- Foot-operated speed control
- Built-in glare-free sew light



OVERLOCK-COVERSTITCH



**PORTABLE
OVERLOCK STITCH
MACHINE
FOUR THREAD
TWO NEEDLE**

Model 14TU854

APPLICATIONS

- For overedging and trimming various materials from lightweight fabrics such as chiffons, silk, suit lining, tricot, linen, cotton, general dress materials and woolens to heavyweight fabrics such as tweeds, coat cloth, jersey and denim
- Sew through denim as well as through the sheerest of fabrics without puckering
- Suitable for overedging such products as jackets, sweaters, dress and sports shirts, overalls, uniforms, jeans, work pants, dresses, jump suits, slips, negligees, pajamas, bathing suits, trousers and coats
- Suitable for general overedging, cross seaming, plain seaming, pintucking and braiding. You can ornament with pintuck or braid stitching and ornamental overlocking.
- Perfect for sample rooms, alteration rooms, tailor's shops, drapery shops, dry cleaners, department stores,

FEATURES

- Two individually adjustable and replaceable loopers
- Easy color coded threading
- Counterbalanced mechanism. Suction cup feet for smooth, vibration-free operation
- Telescoping thread mast (convenient extension spool holders)
- Adjustable stitch length dial
- High-rise looper mechanism with presser foot lift up to 15/64" (6 mm)
- Heavy duty top tungsten-carbide steel knife and lower carbon steel knife ensures sharp, clean cutting
- Easy thread tension control for any thickness of materials and any threads
- Needle guard prevents needle from bending or breaking when stitching heavyweight materials such as denim etc.
- Equipped with built-in motor, electronic foot-operated speed control
- Built-in glare-free sew light

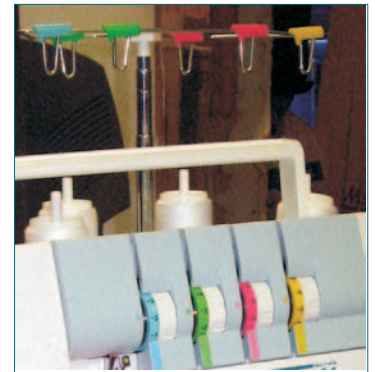
SPECIFICATIONS

SPECIFICATIONS:	
Speed, Max. (S.P.M.)*	1300
Clearance Under Foot	15/64" (Up to 6 mm)
Stitch Length, Max.	24 s.p.i. (1mm - 4mm)
Needle	#2054, 10#-16#
Overedging Stitch Width	(3 - 6.7 mm)
Max. Stitch length	(1~4mm)
Standard Distance between needles	(2.2mm)
Max. presser foot lift	15/64" (6mm)
Differential Ratio	1:0.7 ~ 1:2
Stitch Type	514
Gross weight in shipping carton	19.1lbs. (8.7kg)
Net weight	14.7lbs. (6.7kg)

* Speed depends on materials, thread and operation



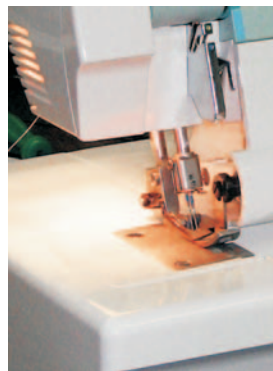
Electronic speed control allows for stitch by stitch operation.



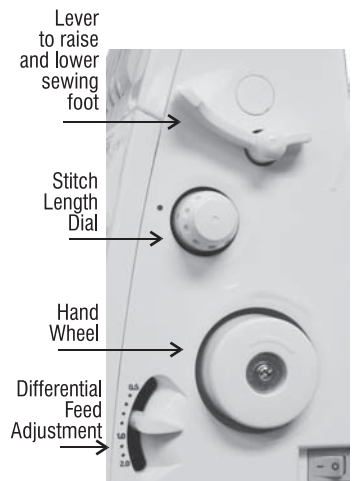
Easy Threading!
Color coded, thread tension dials and guides assure quick threading.



Closeup of needles and snap-on presser foot



Built-in light



Easy to adjust controls